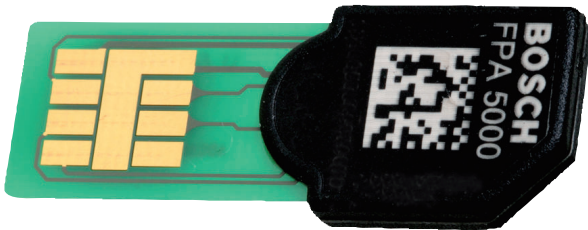




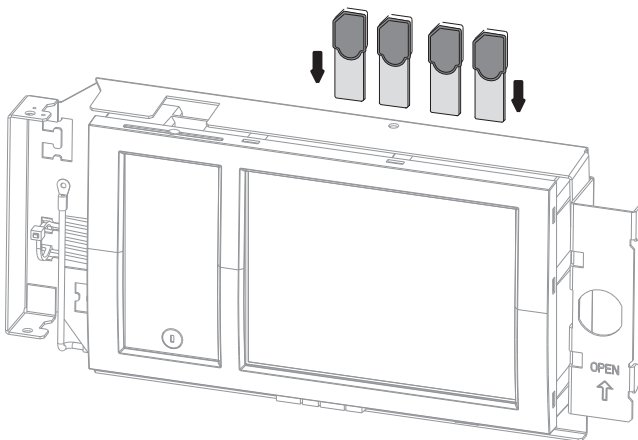
Address Cards



- ▶ Up to 64, 128, 512, 1024 or 2048 addresses on one card
- ▶ Up to four cards in one control panel

A control panel can be equipped with up to four optional Address Cards each containing 64, 128, 512, 1024 or 2048 addresses depending on requirements.

System Overview



- Each element and input which, after the programming, is able to set off an alarm requires a detection point. Inputs are considered as detection points if they are programmed accordingly in the FSP-5000-RPS Programming Software.
- Detection points are required for:
 - manual call points and automatic detectors
 - inputs of LSN elements
 - inputs of functional modules
- Signaling devices and outputs have no detection points!
- Examples for required detection points:
 - The CZM 0004 A 4 Zone Conventional Module is allocated to 4 detection points, one per zone.
 - The IOP 0008 A Input/Output Module is allocated to up to 8 detection points, one for every single supervised input.

Parts Included

Type	Count	Components
ADC 0064 A	1	SIM card with 64 addresses
ADC 0128 A	1	SIM card with 128 addresses
ADC 0512 A	1	SIM card with 512 addresses
ADC 1024 A	1	SIM card with 1024 addresses
ADC 2048 A	1	SIM card with 2048 addresses

Installation/Configuration Notes

- The Address Cards activate detection points. The FPA-5000 governs up to 4096 detection points.

Ordering Information

ADC 0064 A 64 Point Address Card **ADC 0064 A**
for MPC Panel Controller

ADC 0128 A 128 Point Address Card **ADC 0128 A**
for MPC Panel Controller

ADC 0512 A 512 Point Address Card **ADC 0512 A**
for MPC Panel Controller

ADC 1024 A 1024 Point Address Card **ADC 1024 A**
for MPC Panel Controller

ADC-2048-A 2048 Point Address Card **ADC-2048-A**
for MPC Panel Controller

Americas:
Bosch Security Systems, Inc.
130 Perinton Parkway
Fairport, New York, 14450, USA
Phone: +1 800 289 0096
Fax: +1 585 223 9180
security.sales@us.bosch.com
www.boschsecurity.us

Europe, Middle East, Africa:
Bosch Security Systems B.V.
P.O. Box 80002
5600 JB Eindhoven, The Netherlands
Phone: + 31 40 2577 284
Fax: +31 40 2577 330
emea.securitysystems@bosch.com
www.boschsecurity.com

Asia-Pacific:
Robert Bosch (SEA) Pte Ltd, Security Systems
11 Bishan Street 21
Singapore 573943
Phone: +65 6258 5511
Fax: +65 6571 2698
apr.securitysystems@bosch.com
www.boschsecurity.com

Represented by